

ST. JOHN'S - ON - THE - LAKE CHAPEL ASSOCIATION

BEAR ISLAND, LAKE WINNIPESAUKEE, NEW HAMPSHIRE

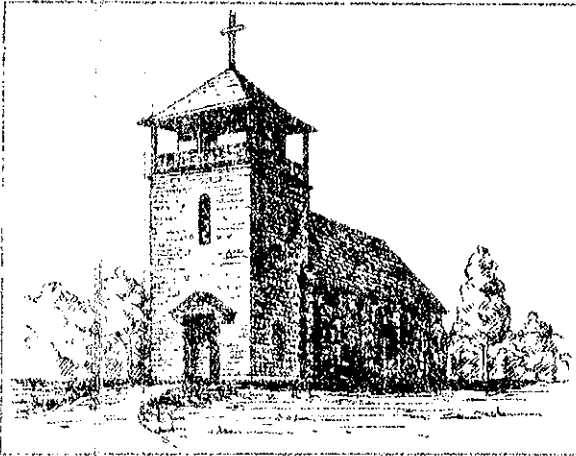
MAIL ADDRESS

32 LANE COURT

LAKEPORT, NEW HAMPSHIRE

03246

September 11, 1969



Dear Member:

OFFICERS

DUANE L. KEELER, President
Bear Island (Boscawen, N. H.)

MRS. WILMET P. DECKER, Vice President
Bear Island (Lynnfield Center, Mass.)

MRS. GEORGE CRISCOM, Recording Secretary
Bear Island (Birmingham, Mich.)

STEPHEN C. CROWTHER, Treasurer and Clerk
Bear Island (Lakeport, N. H.)

BOARD OF INCORPORATORS

DUANE L. KEELER

REV. STANLEY H. HOPPER

STEPHEN C. CROWTHER

JOHN RIPLEY FORBES

RAYMOND W. PEPPARD, M. D.

SERVICES COMMITTEE

REV. STANLEY H. HOPPER

JOHN RIPLEY FORBES

ORGANIST:

MRS. STANLEY H. HOPPER

ALTAR GUARD:

MRS. DUANE KEELER

I delayed sending out our usual membership letter until I had further information to pass on to you. Our President, Duane Keeler, did a splendid job in completing arrangements for our incorporation. We are now chartered under the laws of New Hampshire as a non-profit interdenominational chapel and we have received word from the Episcopal Church of their support of our action and assurance that formal action by the church will take place in February.

This was our first summer of operations as an official interdenominational chapel and I am happy to say was one of our very best. Thanks to the fine leadership of Dr. Stanley Hopper we had outstanding clergy throughout the summer. We are also most grateful to Mrs. Stanley Hopper, organist, for her faithful playing of our newly renovated organ and it was wonderful to enjoy organ music again. On one Sunday we were filled to capacity with many children sitting down in front on the floor, while another Sunday over 75 people were in attendance in spite of rain. It has been gratifying to see the wonderful response of our island community in their enthusiastic use of our island chapel.

Now that the trustees of the St. John's-on-the-Lake Association are fully responsible for the operation and maintenance of the chapel, your support in the form of an annual membership is more important than ever. If you are an annual member, we will appreciate having you renew your 1969 membership. If you do not at present have a membership, we hope you will join.

With appreciation for your support, I am

Very sincerely yours,

John Ripley Forbes, Chairman
Membership Committee